

# HOUSEWORK



**35.29%**

OF BABY BOOMERS BELIEVE THAT CARE AND DOMESTIC WORK IS A WOMAN'S TASK.



**58.49%** OF GENERATION Y BELIEVES THAT **MEN DO NOT KNOW HOW** TO DO CARE AND DOMESTIC WORK

**35.38%**

OF MALE RESPONDENTS BELIEVE THAT IT IS ACCEPTABLE TO TAKE OVER THE HOUSEWORK AND CARE WORK IF PARTNER/ SPOUSE IS SICK.

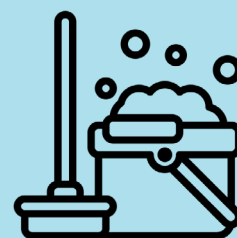
**54.6%**

OF GIRLS ARE TAUGHT TO PREPARE MEALS



**67.8%**

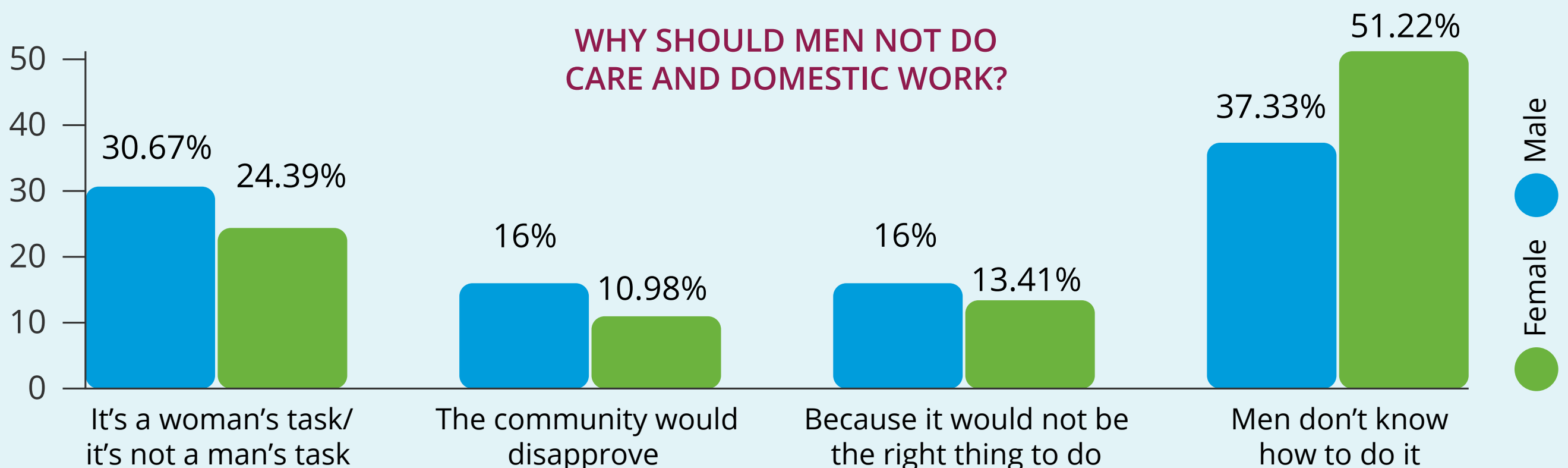
OF GIRLS ARE TAUGHT TO CLEAN THE HOUSE



I spend six to seven hours in housework and with my child in school activities. When I plan well, I can make it all in a day, but it is definitely a full work day at home.



## WHY SHOULD MEN NOT DO CARE AND DOMESTIC WORK?





# CHILDCARE

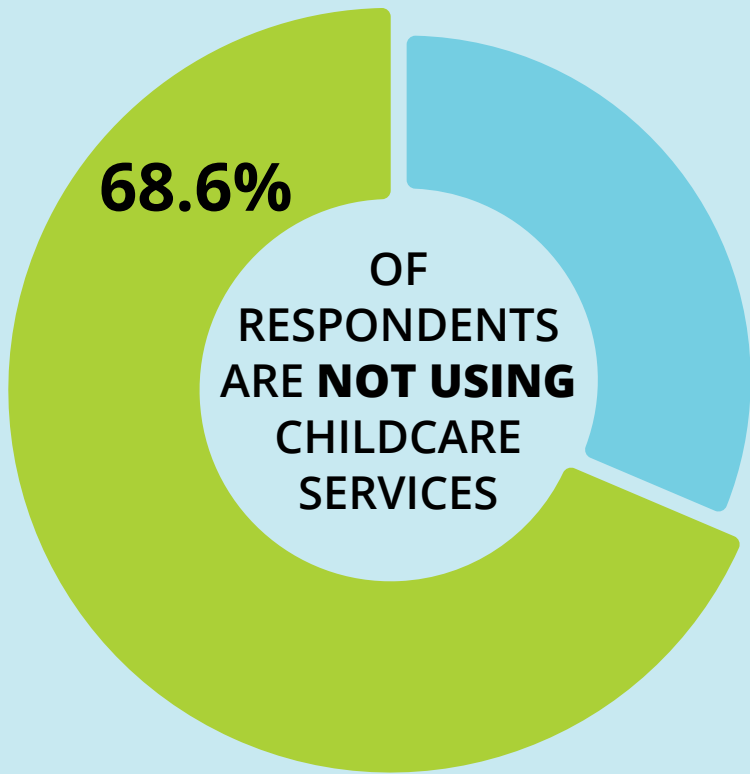


**339** PRE-SCHOOL INSTITUTIONS IN BiH

**6660** CHILDREN WERE ON A WAITING LIST FOR PLACEMENT IN A PRESCHOOL INSTITUTION IN 2020



MOST BENEFICIAL SERVICE FOR **44%** OF RESPONDENTS IS **FREE GOVERNMENT CARE SERVICES.**



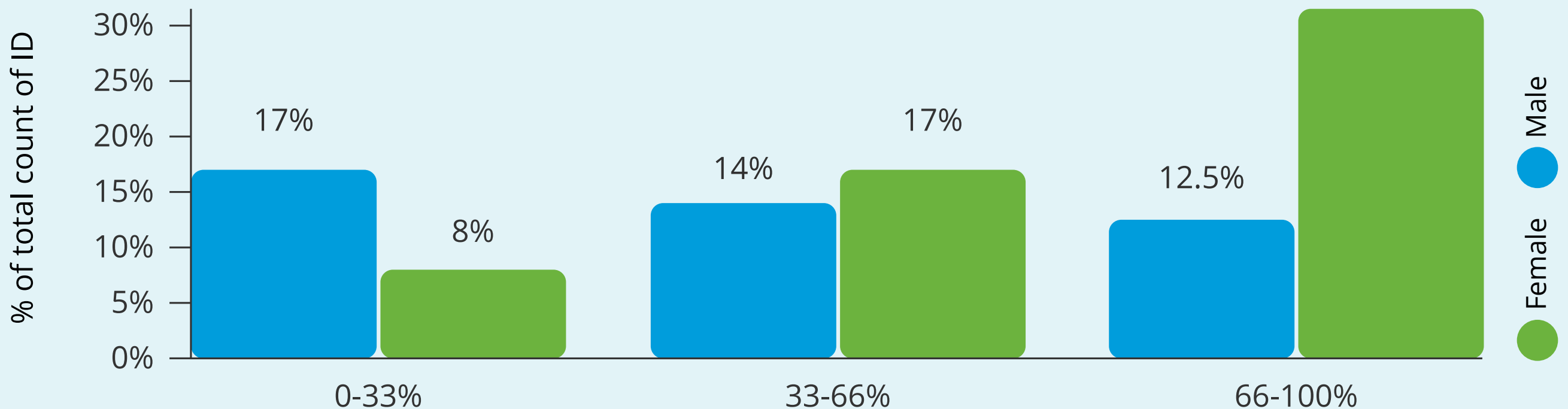
**41.8%** OF RESPONDENTS USE PRIVATE PLAYROOMS OR BABYSITTER



Currently I do not have my own life. I work and the rest of the day is devoted to kids and their various activities. Language, music instruments, sports... my kids have so many obligations that we leave the house before 8 am and arrive back home at about 10 pm.



TIME SPENT ON CHILDCARE DURING THE PANDEMIC





# CARE FOR THE ELDERLY

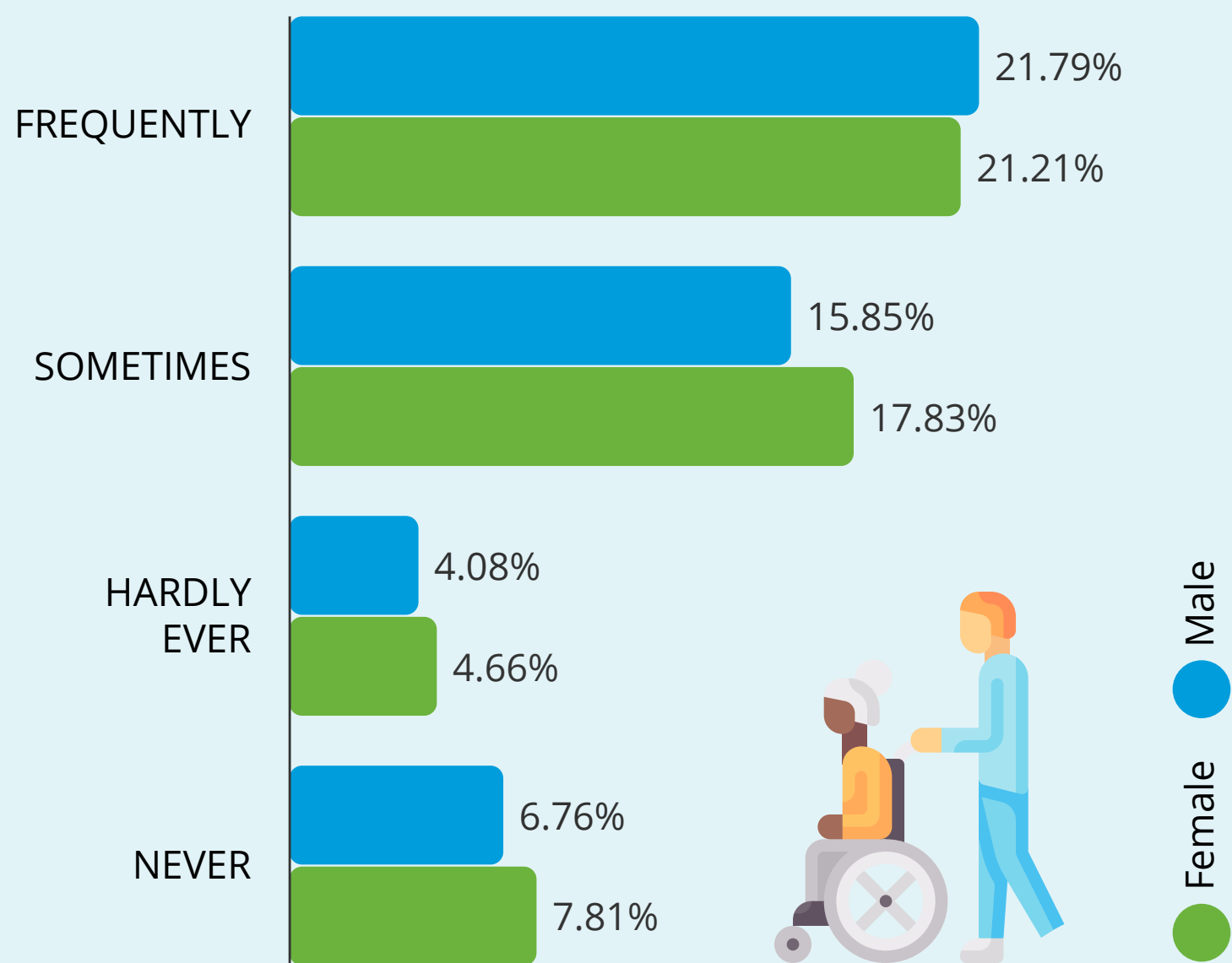


**14.2%** OF POPULATION IN BIH IS **65 YEARS AND OLDER.**



MOST BENEFICIAL SERVICE FOR **47.8%** OF RESPONDENTS IS **FREE GOVERNMENT CARE SERVICES.**

WHEN YOU WERE A CHILD/ TEENAGER DID **YOUR FATHER OR ANOTHER MAN** IN THE HOME TAKE CARE OF THE ELDERLY?



“ Night and insomnia are hardest for me because my grandmother is demented and she sometimes switches day and night and she sleeps when I am at work but at night she walks, she wakes me at night, when I go to bed, she wakes me up, honestly, not sleeping is killing me. ”

**46.7%**



of women report spending **10 hours** weekly on elderly care.

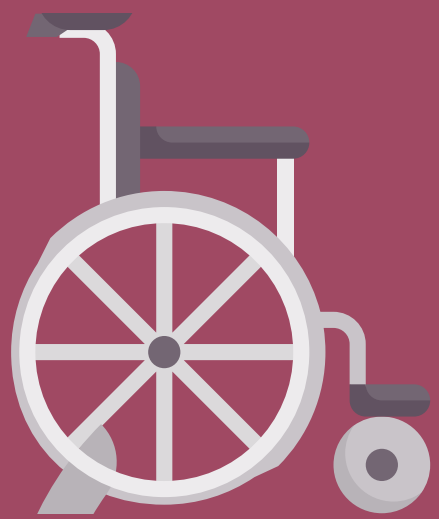
**0 - 1500 BAM**  
PRICE OF  
ACCOMMODATION  
IN ELDERLY HOME



**60%**

OF RESPONDENTS ARE OPPOSING THE IDEA OF PUTTING THEIR PARENTS OR IN-LAWS IN ELDERLY HOMES





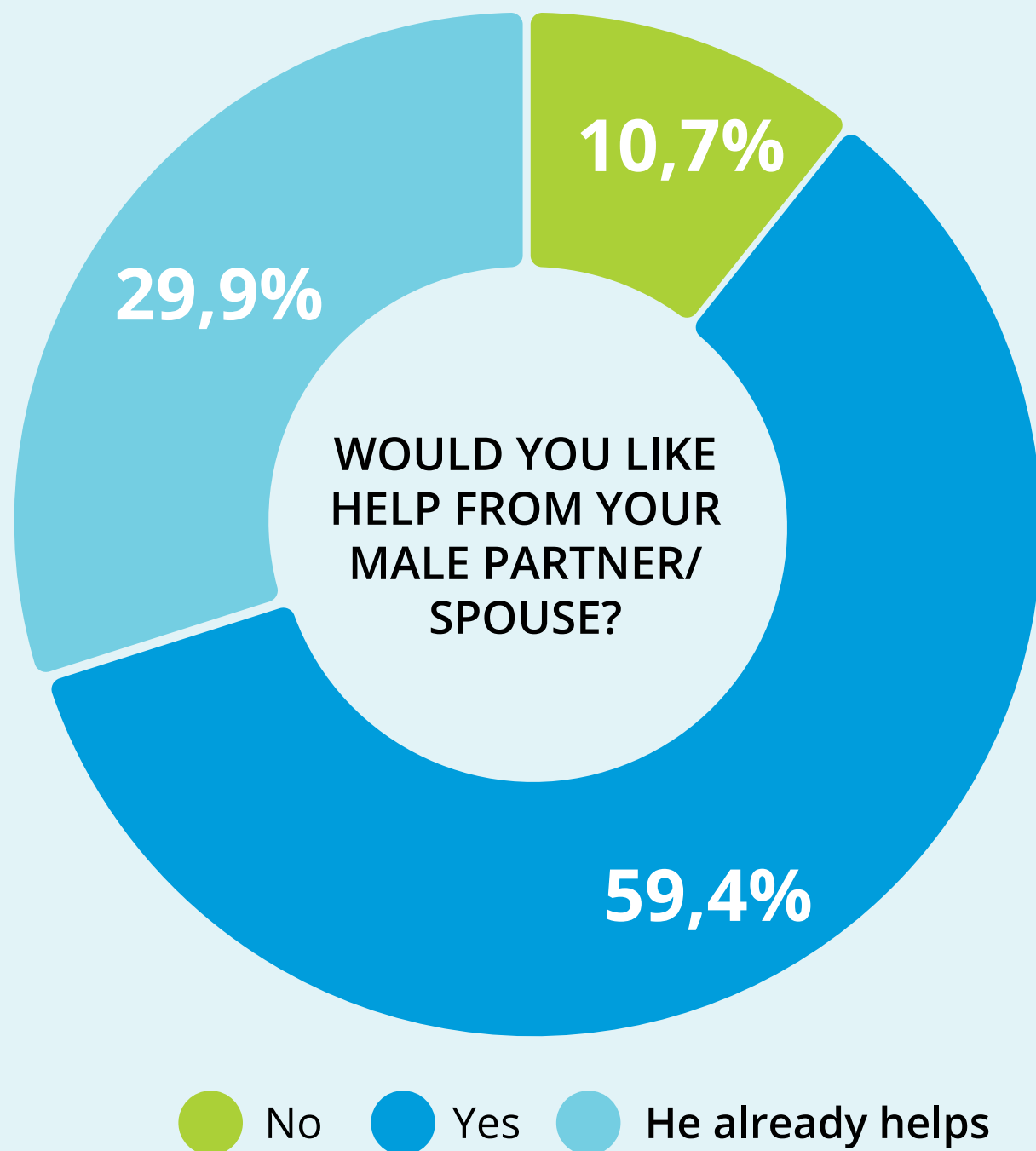
# CARE FOR PERSONS WITH DISABILITIES

70%

OF MARRIAGES WITH CHILDREN WITH DEVELOPMENTAL DISABILITIES END IN DIVORCE



MOST BENEFICIAL SERVICE FOR **47.8%** OF RESPONDENTS IS **CASH SUBSIDY** FOR FAMILY OR FOR CARE WORK.



There is a significant shortcoming in health care in terms of not providing support to parents when diagnosis is communicated to them. I received no assistance from a psychologist, psychiatrist, or other specialist of that kind.



**2,434**

IS THE NUMBER OF PEOPLE THAT SOCIAL PROTECTION INSTITUTIONS FOR DISABLED CHILDREN, YOUTH, AND ADULTS WITH DISORDERS IN MENTAL AND PHYSICAL DEVELOPMENT TAKE CARE OF.

## REASONS FOR NOT WANTING HELP FROM A MALE PARTNER/SPOUSE:



**36.3%**

OF MEN WILL NOT KNOW HOW TO HELP WITH PEOPLE WITH DISABILITIES



**26.4%**

OF MEN ARE BUSY WITH PAID WORK

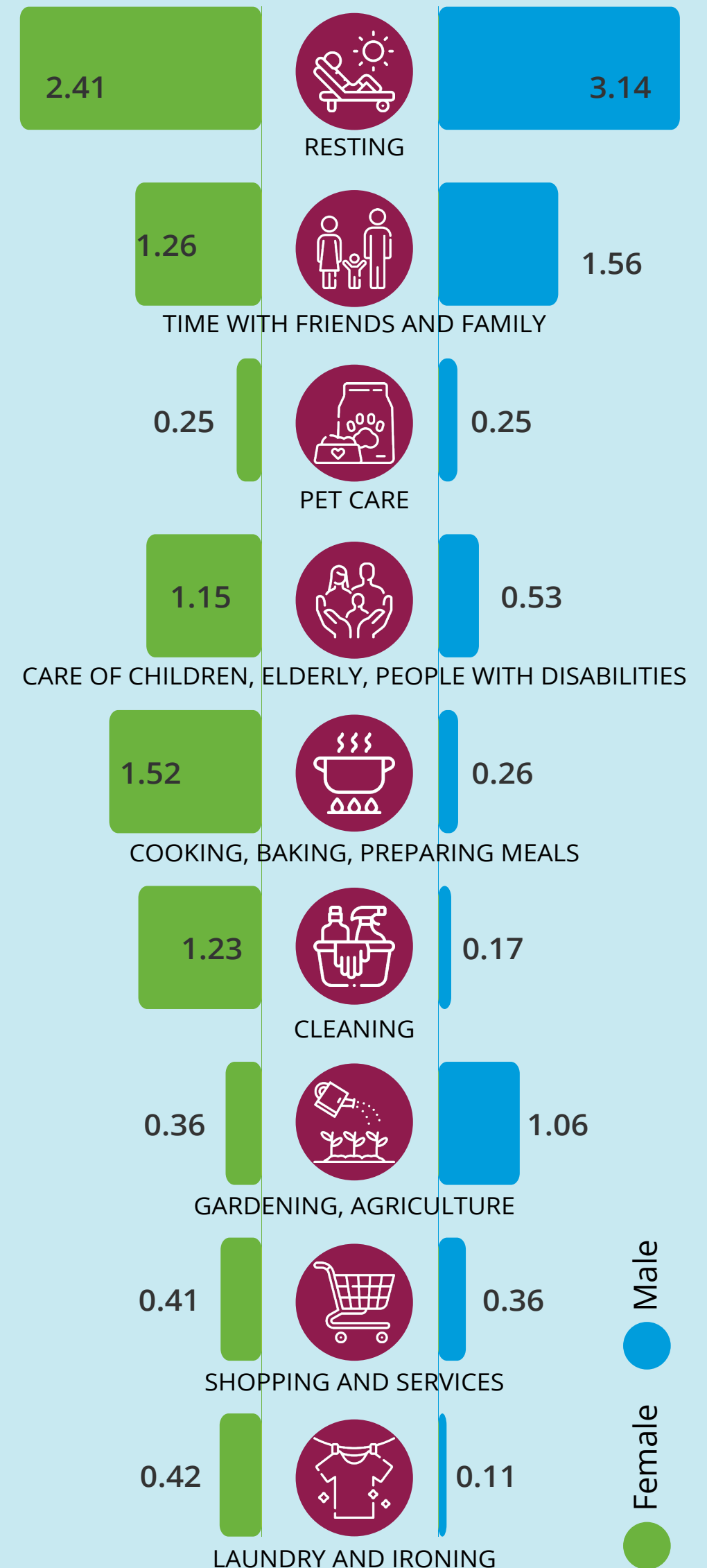


# TIME USE

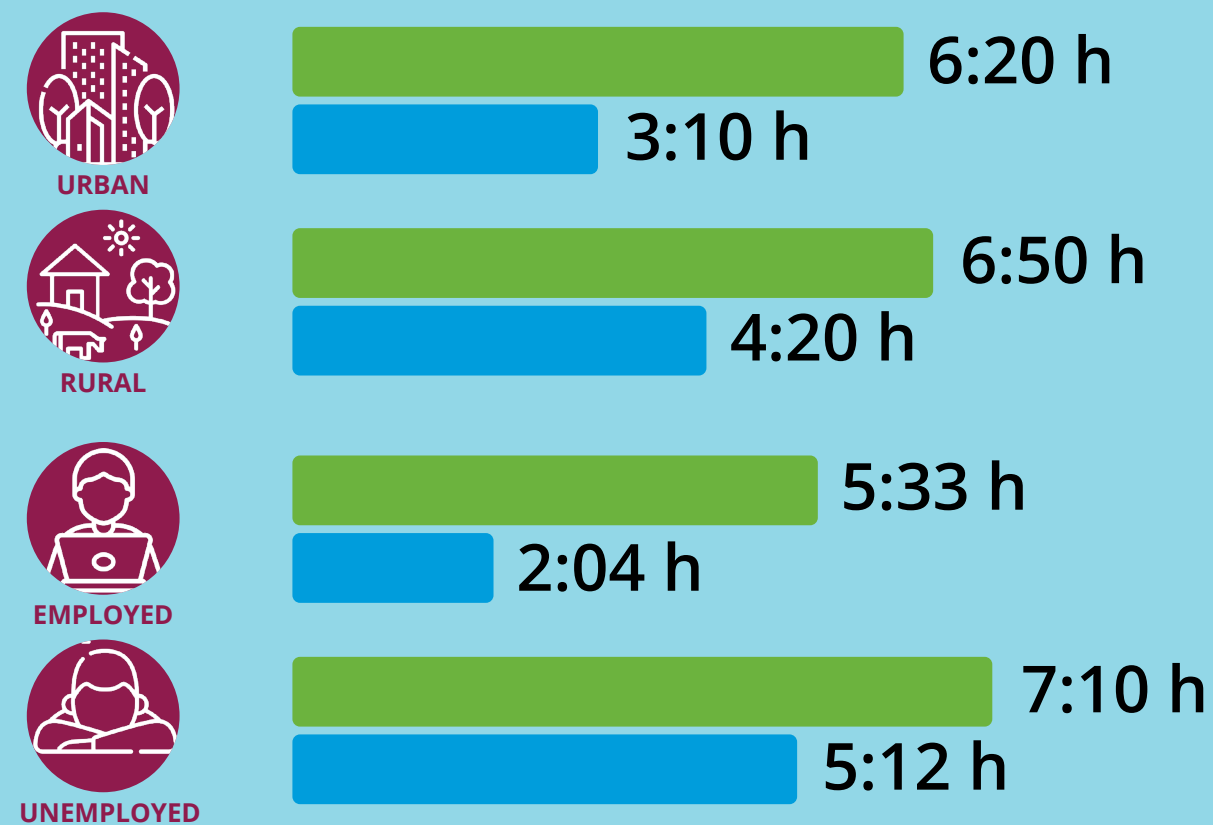
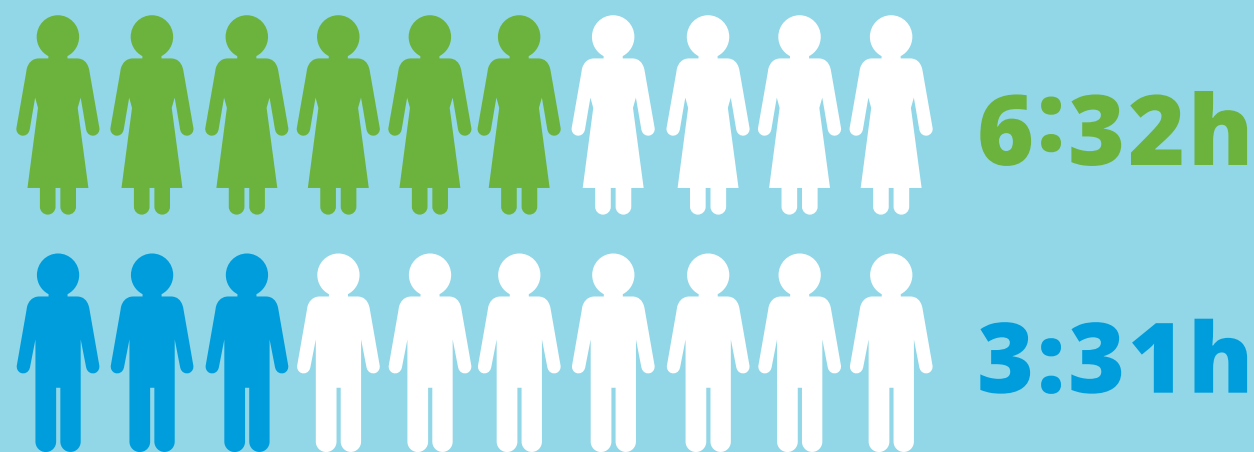


While **85% of women** cook at least once a day, this is true for only **27% of men**.

## TIME USE IN SPECIFIC ACTIVITIES DURING THE DAY PER GENDER



## TIME SPENT ON CARE ACTIVITIES



“ The expectation of society is that everything (in the household) is up to the woman, and that the man does not have to do anything because he is the host. The problem is that this is a normal approach for new generations. ”



● Male  
● Female